



شركة المسؤولية للصيانة  
**INCHARGE**  
Maintenance Company

# COMPANY PROFILE

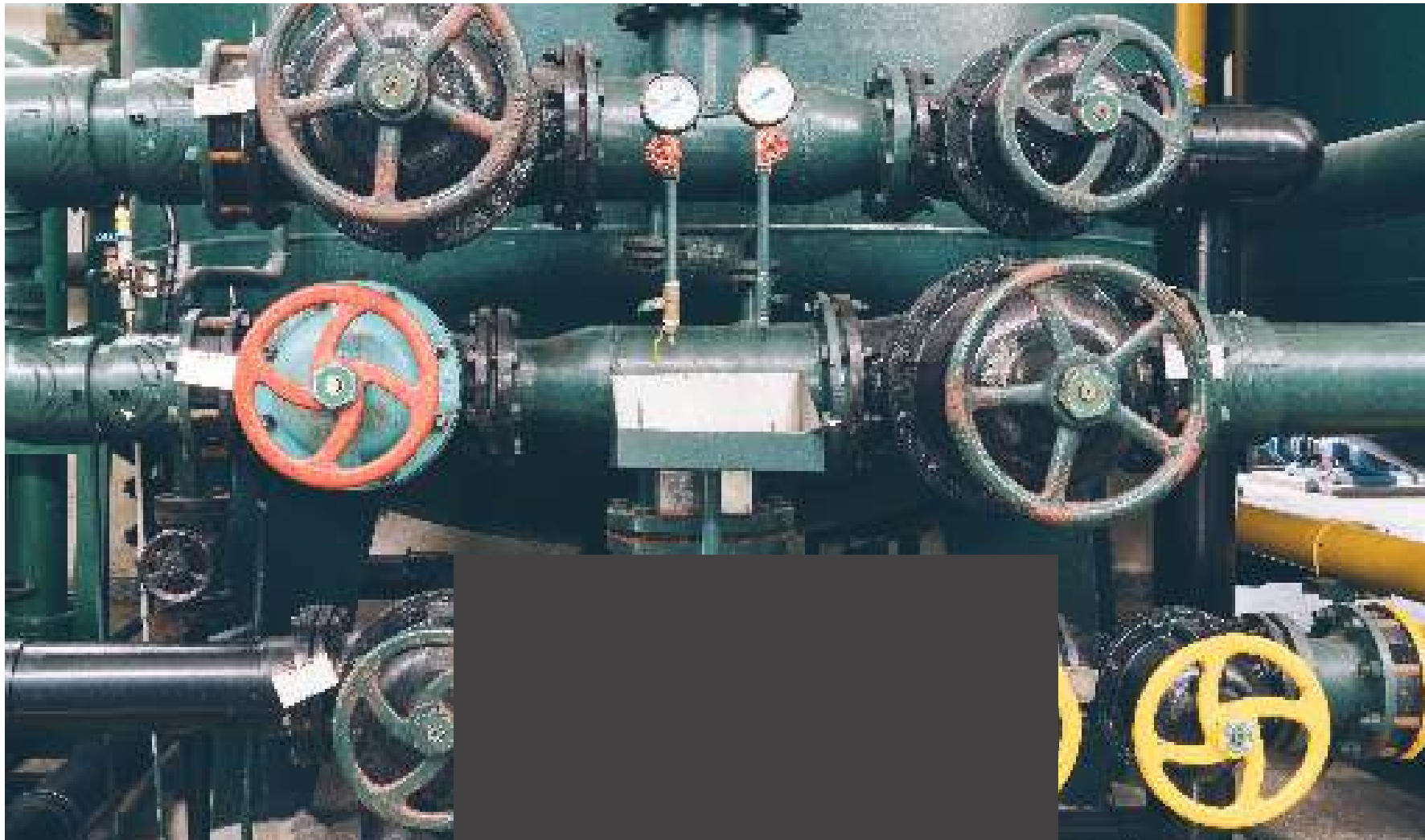
INCHARGE MAINTENANCE CO.



إحدى شركات إمكان القابضة  
An EMKAN Company

إمكان  
EMKAN  
HOLDING القابضة





**INCHARGE  
MAINTENANCE CO.**

# OVERVIEW

INCHARGE Maintenance Company:  
Your Trusted Partner in Industrial  
Maintenance.

# TABLE OF CONTENTS

1. COMPANY BACKGROUND
2. EXECUTIVE SUMMARY
3. MISSION & VISION
4. GOALS AND OBJECTIVES
5. OUR SERVICES
6. SAFETY COMMITMENT
7. QUALITY POLICY





# COMPANY BACKGROUND



INCHARGE Maintenance Company, derived from Saad Ali Alessa for Contracting Co. and a proud subsidiary of Emkan Holding Co. Saudi Arabia, has quickly risen to prominence in the industrial maintenance sector. With our headquarters strategically located in Al-Khobar, we are ideally positioned to serve the diverse needs of manufacturing plants, pipelines, refineries, and other industrial facilities across the region.

# EXECUTIVE SUMMARY

INCHARGE Maintenance Company is a dedicated industrial maintenance company located in Al- Khobar, Kingdom of Saudi Arabia.

Our mission is to provide top-notch maintenance services to industrial facilities, ensuring smooth operations and minimizing downtime. With a team of skilled technicians and a commitment to excellence, we aim to be the go-to partner for industrial maintenance needs in our region.





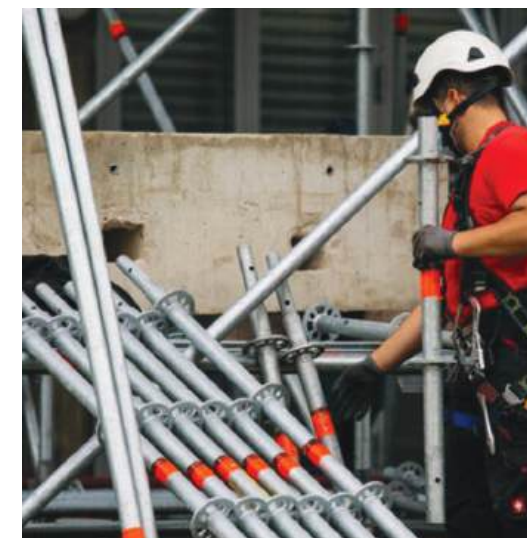
# MISSION

- To deliver exceptional industrial maintenance services that enhance the reliability and performance of our clients' facilities.



# VISION

- To be the leading industrial maintenance provider known for excellence, innovation, and customer satisfaction.





# GOALS AND OBJECTIVES



## Increase Operational Efficiency

Reduce downtime through the implementation of preventive maintenance strategies.

Streamline maintenance processes by implementing new software and tools to enhance team productivity.

## Expand Client Base

Achieve growth in new contracts by targeting key industries such as manufacturing, energy, and transportation.

Develop and launch a comprehensive marketing campaign to increase brand awareness and attract new clients.

## Enhance Technical Expertise

Invest in ongoing training and certification programs for technicians to stay updated with the latest mechanical maintenance techniques and technologies.

Implement a mentorship program to develop junior technicians and retain top talent within the company.

## Improve Customer Satisfaction

Increase customer satisfaction through improved communication, faster response times, and personalized service offerings.

Establish a client feedback loop to continuously gather insights and improve service delivery.



## Sustainability and Safet

Reduce the environmental impact of maintenance operations by adopting eco-friendly practices and materials

# OUR SERVICES

At INCHARGE, we specialize in offering a comprehensive suite of maintenance services designed to ensure the smooth and efficient operation of industrial infrastructures. Our expertise spans various critical services, including:

- Valves Maintenance Services: Ensuring the optimal functionality and longevity of industrial valves.
- Emergency Repairs and Troubleshooting: Providing rapid response solutions to minimize downtime and operational disruptions.
- Non-metallic Pipe Wrapping: Enhancing the durability and protection of pipelines.
- Pipe and Vessel Thermal Insulation & Noise Reduction: Improving energy efficiency and reducing operational noise in industrial settings.
- Leak Sealing Services: Preventing costly leaks and ensuring the integrity of pipelines and vessels.
- Pipe Cold Cutting: Precision cutting services for safe and efficient pipeline maintenance.
- Flange Facing: Restoring flange surfaces to prevent leaks and ensure a tight seal.
- Bolt Torquing: Ensuring proper bolt tensioning for safe and secure connections.
- Trading Services: Supplying high-quality industrial components to meet the diverse needs of our clients.
- At INCHARGE, we are committed to contributing to the growth of the national economy while striving to expand our reach globally in the field of valves and industrial maintenance.



# VALVE MAINTENANCE SERVICES

Incharge Maintenance Co. offers total valve care solutions that will reduce the overall costs of repairing and replacing of valves.

We offer a wide variety of specialized valve maintenance products developed for the oil & gas industry that protect and prolong the service life of a valve.

In addition, Incharge Maintenance Co. provides both reactive and preventive online valve lubrication and sealing services, which will reduce the costs resulting from timely shutdown and production cut-off.



**PRESSURELUBE**  
INTERNATIONAL



# RANGE OF SERVICES

## Reactive & Preventive Maintenance Services

- Testing, Flushing and sealing
- On call; to service any jammed and passing valve
- Setting up of preventative valve maintenance programs
- Setting up of valve lubrication systems
- Training
- Sales of equipment & products



# NON-METALLIC COMPOSITE REPAIRS

We Provide Composite wrap, a permanent or temporary, cost-effective pipeline repair technology, suitable for leaking and non-leaking defects such as pits, dents, gouges, internal and external corrosion. Composite wrap can be performed on an operating pipeline without taking it out of service. This repair technique is quick and generally less costly than other repair options, and it permanently restores external corrosion and capability of the pipe.

Composite wrap can serve as an alternative to the traditional pipeline repair practices such as pipeline replacement or the installation of full-encirclement steel split sleeves. Compared to these traditional practices, composite wrap repairs are generally less expensive and time consuming, and labor intensive. In the case of pipeline replacement, composite wrap repair has additional advantages of avoiding customer service interruptions and eliminating methane emissions associated with the venting of the damaged pipeline.

Using composite wrap as an alternative to pipeline replacement often saves enough to pay back repair costs immediately.





# INSULATION SERVICES



—

Stanca Solutions Provide High Quality Solutions for Offshore, Marine, Refineries and Power Plant Industry.

They offer professional Life Cycle solutions of Pipe insulation, accommodation, fire protection for the Oil & Gas industry as for Marine and Onshore installations.

# COLD CUTTING & BEVELING

Our Cold Pipe cutting & Beveling Services are the right choice for hazardous conditions. It allows you to cut and chamfer your piping without generating flames or sparks, preventing any ignition of residual gases contained inside your lines.






## **BOLT TORQUING SERVICES**

Incharge offers a comprehensive solution for ensuring flange joint integrity. Our team is highly trained and well experienced to safely ensure leak-free bolted connections. With a wide range of bolt torque and bolt tensioning tools compliant with ASME/API and international standards, we are equipped to address various types of flanges and handle multiple shutdowns and projects simultaneously.



## **FLANGE FACING SERVICES**

Incharge Maintenance Co. offers on-site flange facing services for a variety of industrial applications. Our experienced team are ready to cover all types of flanges, reducing your downtime, increasing durability and maximizing revenue.





# SAFETY COMMITMENT



## INCHARGE MAINTENANCE COMPANY: Health and Safety Commitment

INCHARGE Maintenance Co. is dedicated to ensuring a safe and healthy working environment for the well-being of employees and stakeholders. We believe that maintaining high standards of health and safety in the workplace is essential to achieving excellence. Our commitment is reflected in the following principles:

- Injury prevention and health promotion activities: We focus on preventing injury and illness by continuously improving our health management, safety and performance.
- Safe working environment: We ensure that your workplace, equipment, facilities and machinery are safe and use, handle, store and transport goods and materials in accordance with the highest safety standards.
- Employee training: We provide comprehensive information, advice, training and guidance to maintain a safe and healthy work environment for all employees.
- Emergency Preparedness: We implement and manage emergency procedures and evacuation plans in order to respond effectively to incidents and any contingencies.
- Employee participation: We maintain an effective system of communication with our employees and encourage their participation in health and safety matters.
- Performance monitoring: We set annual health and safety goals and objectives and monitor their implementation on a regular basis through inspections, audits and accident investigations.
- Right to Work: We implement a "No Supervisor, No Work Policy" and enforce "stop work authority" that allows employees to report bad and unsafe practices, thereby reducing the risk of accident.

INCHARGE MAINTENANCE CO adheres to these principles and ensures a safe, healthy and productive work environment for all.

# QUALITY POLICY

## The Quality Policy and Obligation of INCHARGE Maintenance Co.

The health and safety of every person on our property are of utmost importance to INCHARGE Maintenance Co.

All workers, subcontractors, guests, and anybody else on our property have the following obligations:

- Exercise reasonable caution for both their own and others' health and safety.
- Follow safety procedures to guarantee that everyone is working in a secure atmosphere.

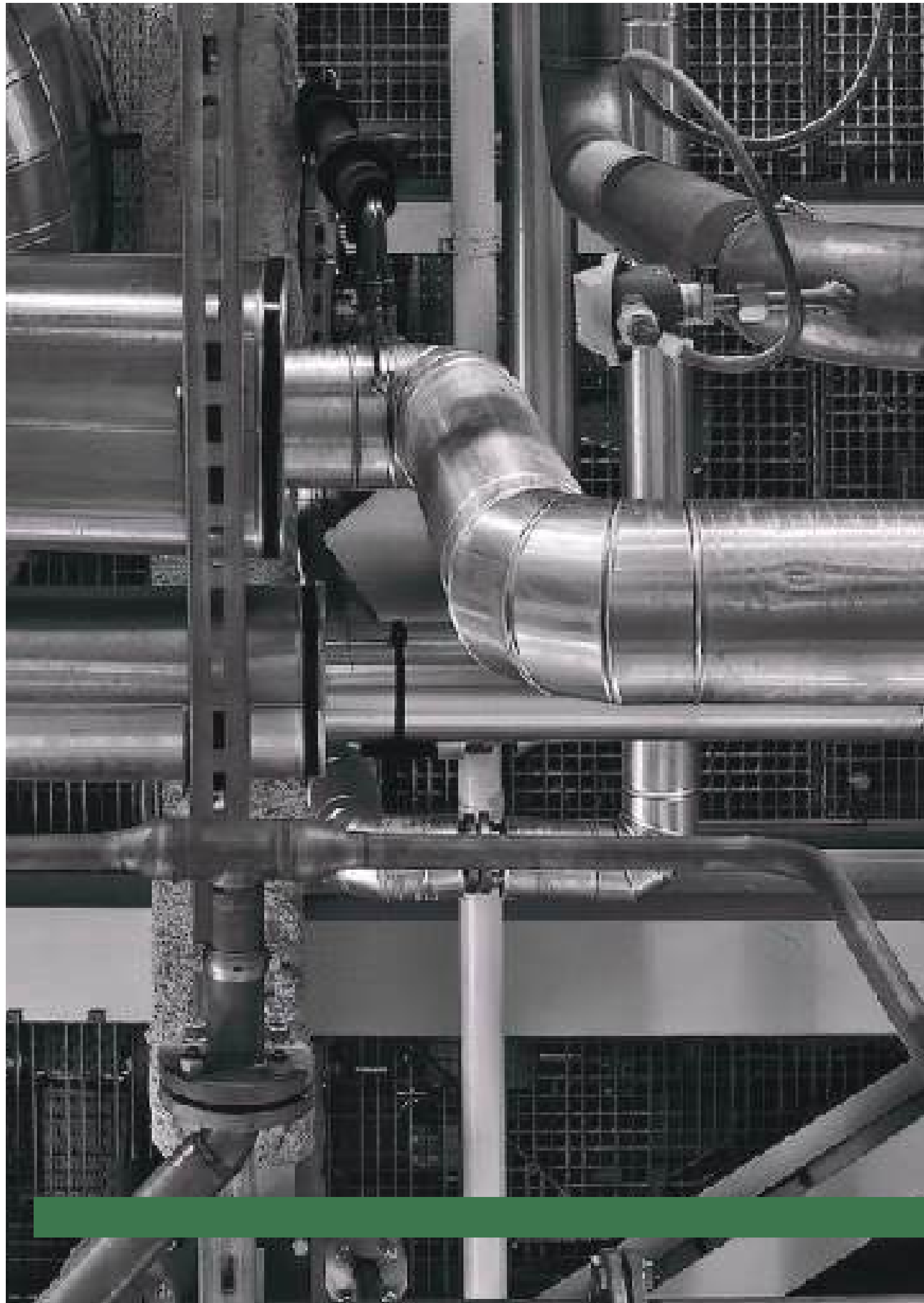
To make sure that our health and safety rules are current and appropriate for our needs as a business, management will periodically evaluate them. We think that everyone has a responsibility to ensure everyone's health, safety, and welfare in order to ensure that activities are conducted incident-free and safely

## Quality Policy

INCHARGE Maintenance Co. is committed to providing the highest quality standard within the business coverage throughout the kingdom.

- Effective implementation of Quality Management System Quality Assurance & Quality Control, Management Reviews, and Objectives that conform to ISO 9001:2015 and customer quality requirements.
  - Consistent meetings and exceeding client's expectations for product quality and performance.
  - Punctual delivery of products and services to meet customer's requirements.
  - Continual improvement of Quality Management, reducing non-conformance concerns.
  - Ensuring Personnel are properly trained so they can serve the customers best.
- "Quality Policy, Objectives principles, and procedure is always implemented and updated.





شركة المسؤولية للصيانة

**INCHARGE**

Maintenance Company

## CONTACT



+966-13-806-0803



[www.incharge-co.com](http://www.incharge-co.com)

[Info@incharge-co.com](mailto:Info@incharge-co.com)



King Fahad Rd,  
Al bandariyah dist., Al Khobar.